

PONTE SULLO STRETTO DI MESSINA DIRECTIONAL AREA AND MONITORING CENTER





MAR TIRRENO

STRETTO DI MESSINA





SCYLLA, CA. 450 B.C.



CALABRIAN COINS FROM 281 B.C.



CALABRIA SITE PHOTO

VISION

- **Create a hinge between the bridge and the territory, landscape, natural resources, local life and memory**
- **Integrate the bridge monitoring center with a public piazza and other public functions to create a public attraction**
- **Commercial Center with hotel, conference center, spa and pools, a shopping mall and a multiplex cinema together with a sculpture garden**
- **Re-naturalize the landscape affected by the bridge building**
- **Enhance the tunnel entrances and the bridge anchor blocks**
- **New waterfront destination including wharves and piers, a new ferry terminal and yacht harbor at Canitello**
- **Public promenade from the anchor blocks to the waterfront**
- **Cable car from the Directional Area to the waterfront**

DIRECTIONAL AREA AND
MONITORING CENTER

ANCHOR BLOCKS

TUNNEL ENTRANCES



MODEL PHOTO



DIRECTIONAL AREA AND
MONITORING CENTER

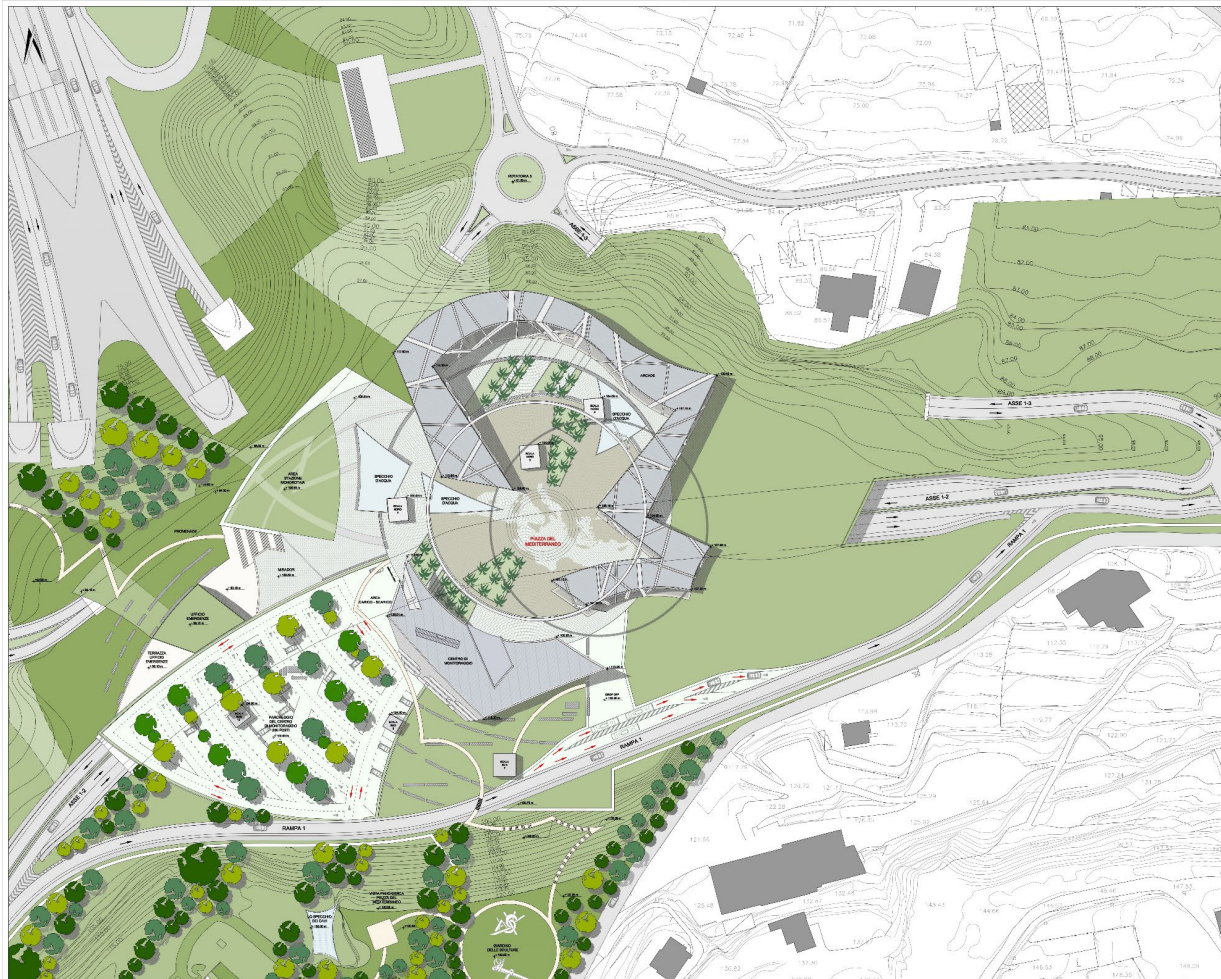
TUNNEL ENTRANCES

WATERFRONT AREA

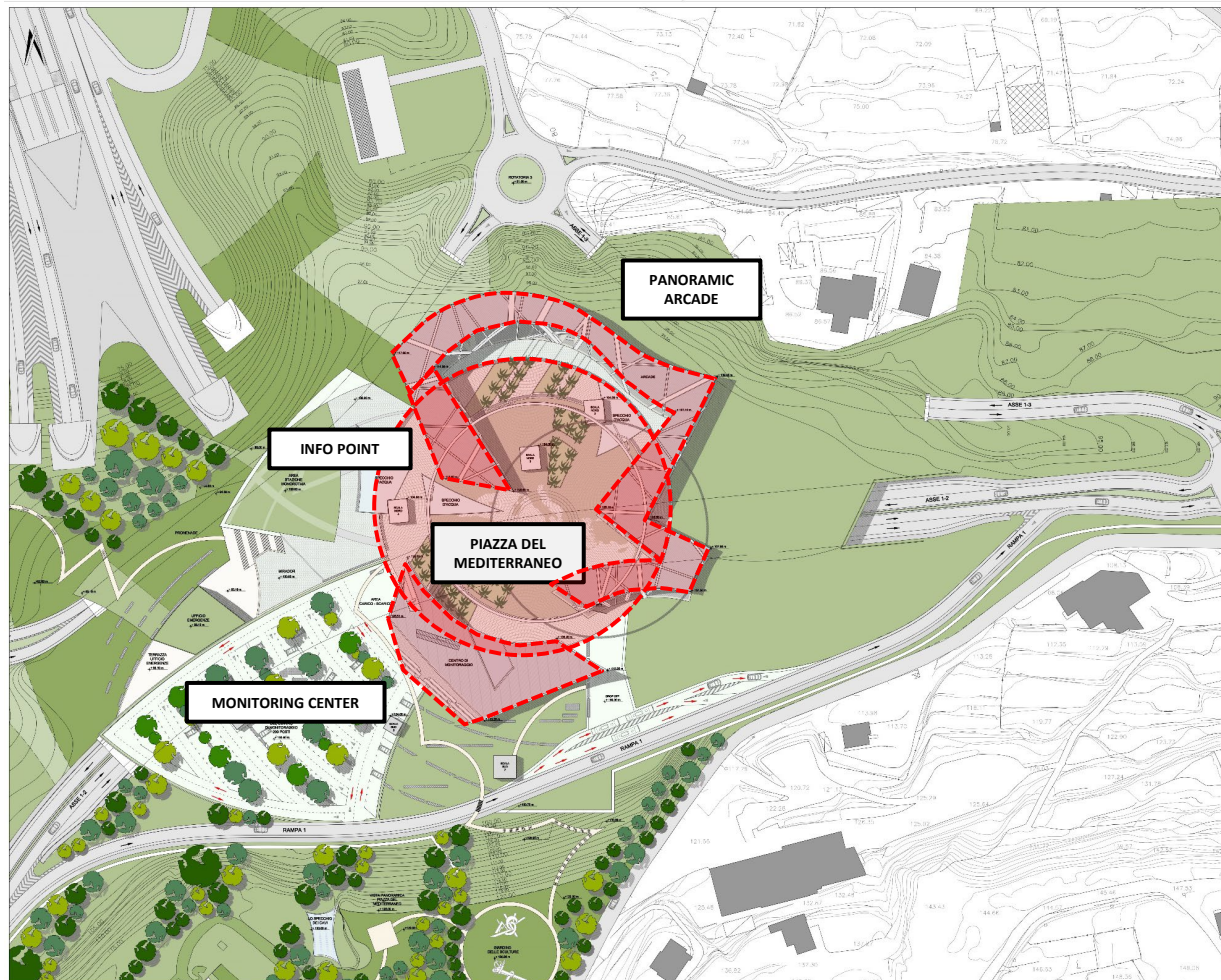
MODEL PHOTO

DIRECTIONAL AREA (PHASE A)

- **Combine functionality and reference to the Mediterranean identity, its interweaving of different cultures, religions, and languages**
- **Shape the building to embrace the Piazza**
- **Integrate a public atrium and a viewing platform into the Monitoring Center building**
- **Mediterranean Piazza as a public destination with a walk-on map of the Mediterranean**
- **Panoramic Arcade as a weather-protected promenade for visitors to enjoy views of the strait and the bridge**
- **Info Point with views of the bridge**
- **Suspended Ring as an iconic element that connects to the countries around the Mediterranean by engravings, inscriptions and lighting**
- **Provide parking under the Piazza and embedded into the landscape at Grade**



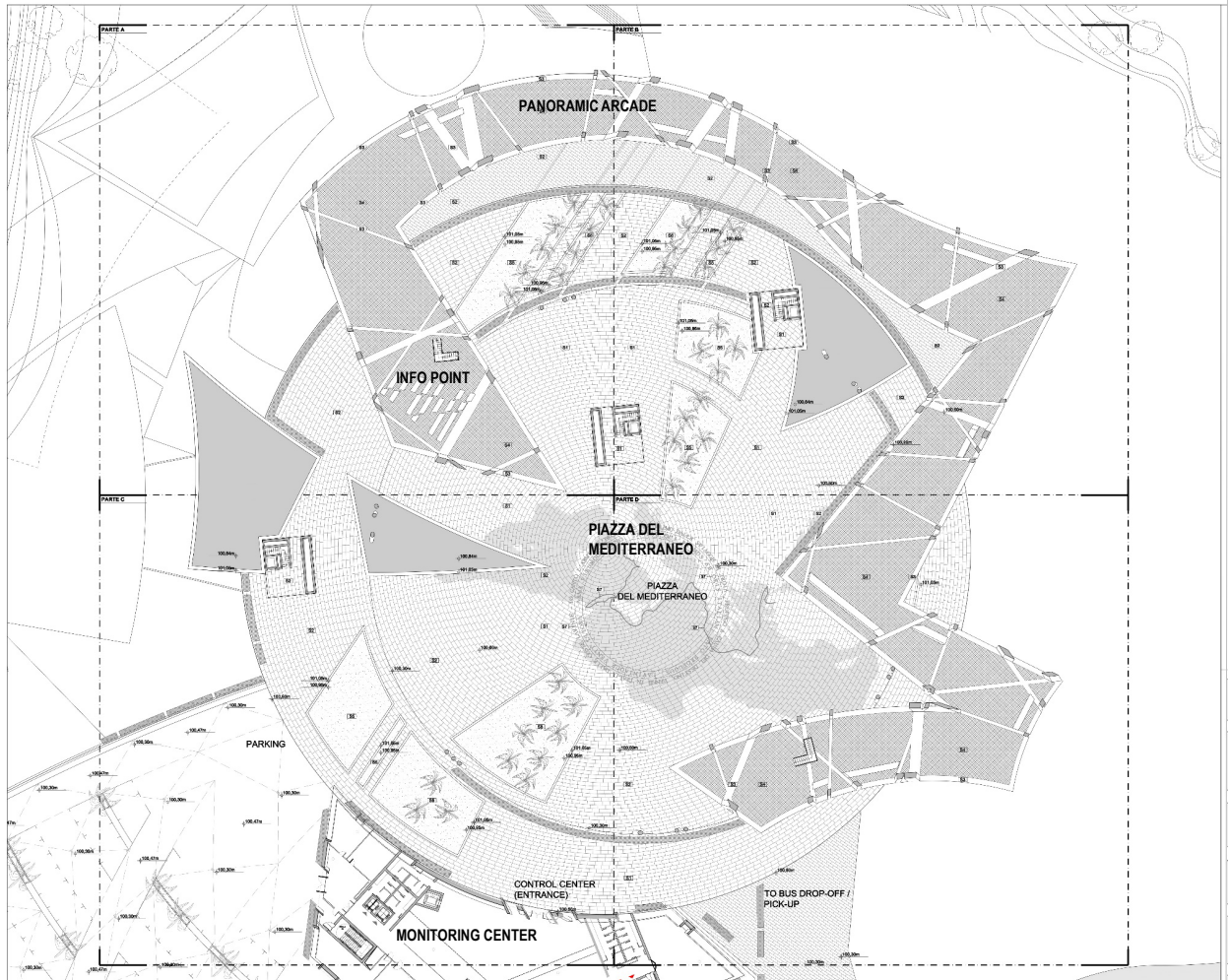
SITE PLAN. DIRECTIONAL AREA (PHASE A)



SITE PLAN. DIRECTIONAL AREA

VIEW OF INFO POINT, ARCADE, RING AND MONITORING CENTER. VIEW FROM NORTHWEST





GROUND FLOOR PLAN. PIAZZA, ARCADE AND INFO POINT



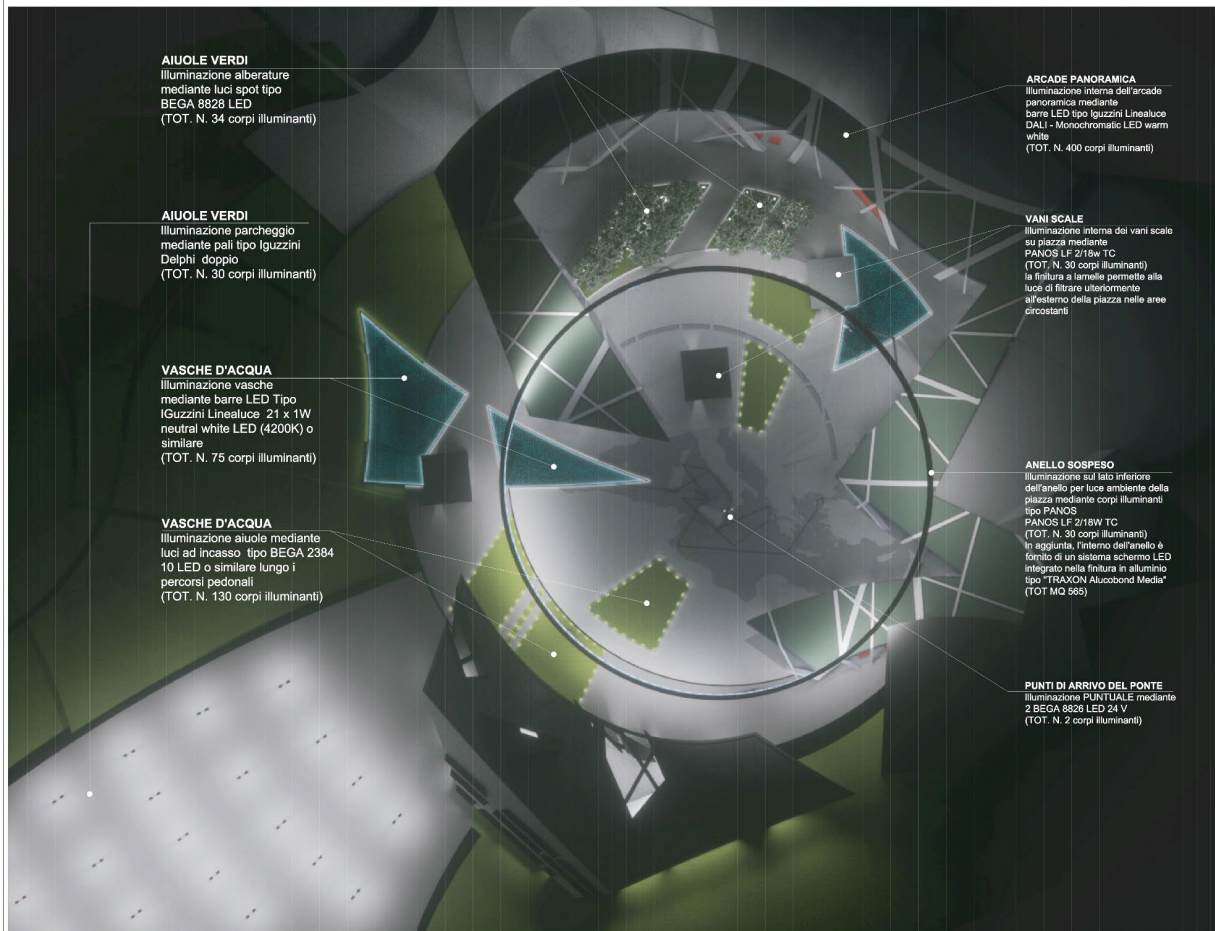
BASEMENT PLAN. PARKING GARAGE



ROOF PLAN. PIAZZA, ARCADE AND INFO POINT



PIAZZA DEL MEDITERRANEO AND ARCADE. PLAN



AIUOLE VERDI

Illuminazione alberature
mediante luci spot tipo
BEGA 8828 LED
(TOT. N. 34 corpi illuminanti)

AIUOLE VERDI

Illuminazione parcheggio
mediante pali tipo Iguzzini
Delphi doppio
(TOT. N. 30 corpi illuminanti)

VASCHE D'ACQUA

Illuminazione vasche
mediante barre LED Tipo
IGuzzini Linealuce 21 x 1W
neutral white LED (4200K) o
similare
(TOT. N. 75 corpi illuminanti)

VASCHE D'ACQUA

Illuminazione aiuole mediante
luci ad innesco tipo BEGA 2384
10 LED o similare lungo i
percorsi pedonali
(TOT. N. 130 corpi illuminanti)

ARCADE PANORAMICA

Illuminazione interna dell'arcade
panoramica mediante
barre LED tipo Iguzzini Linealuce
DALI - Monochromatic LED warm
white
(TOT. N. 400 corpi illuminanti)

VANI SCALE

Illuminazione interna dei vani scale
su piazza mediante
PANOS LF 2/15W TC
(TOT. N. 30 corpi illuminanti)
la filtratura a larnelle permette alla
luce di filtrare ulteriormente
all'esterno della piazza nelle aree
circostanti

ANELLO SOSPESO

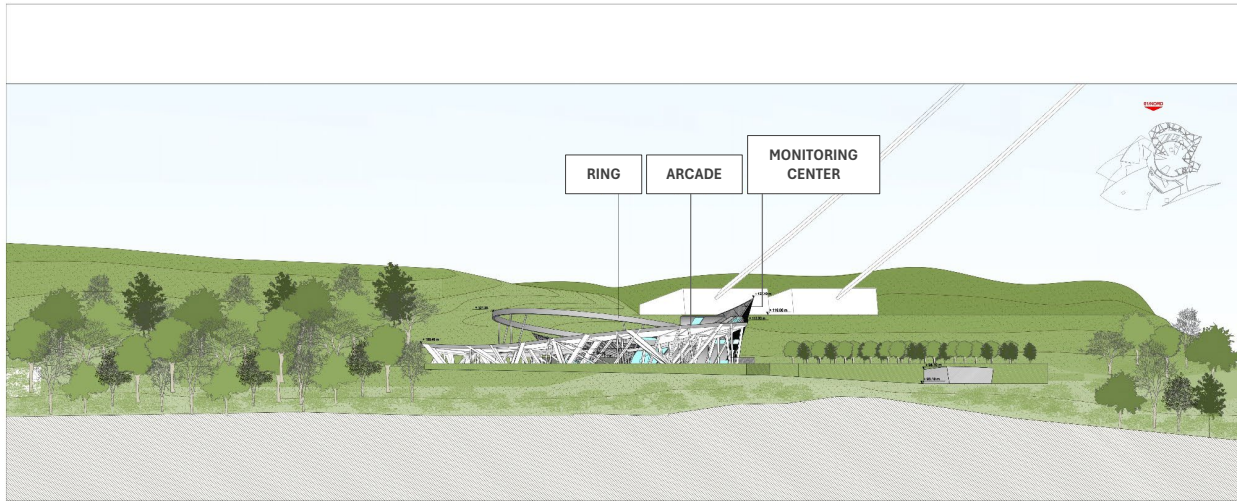
Illuminazione sul lato inferiore
dell'anello per luce ambiente della
piazza mediante corpi illuminanti
tipo PANOS
PANOS LF 2/15W TC
(TOT. N. 30 corpi illuminanti)
In aggiunta, l'interno dell'anello è
fornito di un sistema schermo LED
integrato nella filtratura in alluminio
tipo "TRAXON Alucobond Media"
(TOT. N. 2 corpi illuminanti)

PUNTI DI ARRIVO DEL PONTE

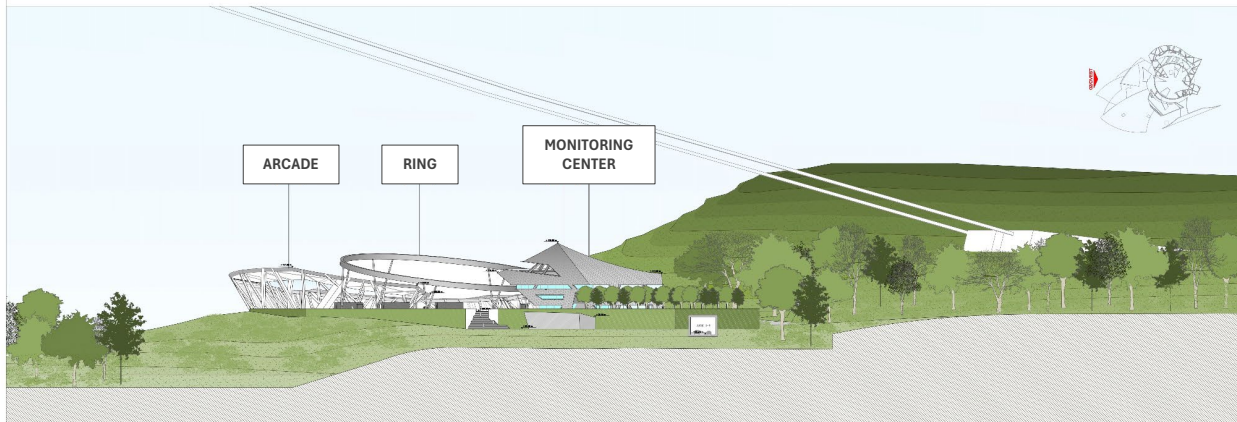
Illuminazione PUNTUALE mediante
2 BEGA 8891 LED 24 V
(TOT. N. 2 corpi illuminanti)

LANDSCAPE INTEGRATION

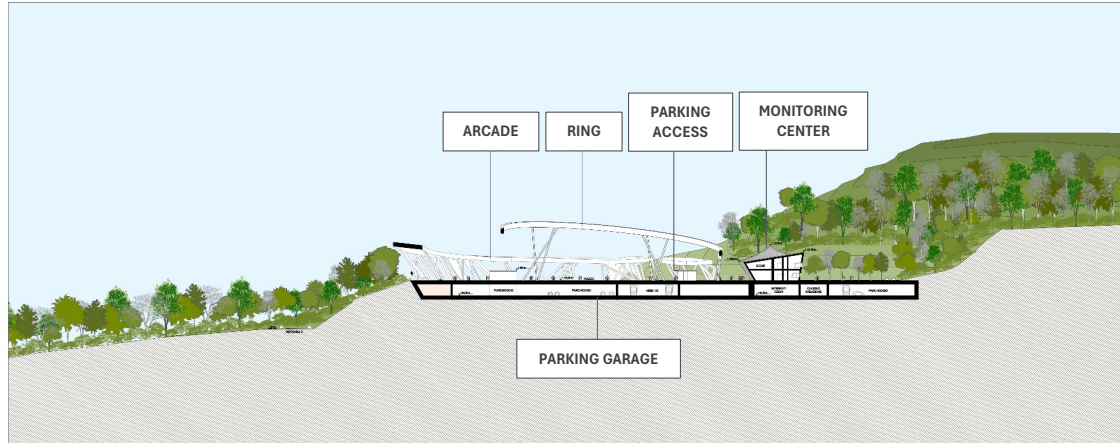
- **Place Directional Area on a natural plateau reducing earth movement**
- **Building volumes well integrated with the bridge and the landscape**
- **Access roads and most parking below grade**
- **Repair und enhance landscape around the project**
- **Plant local trees**



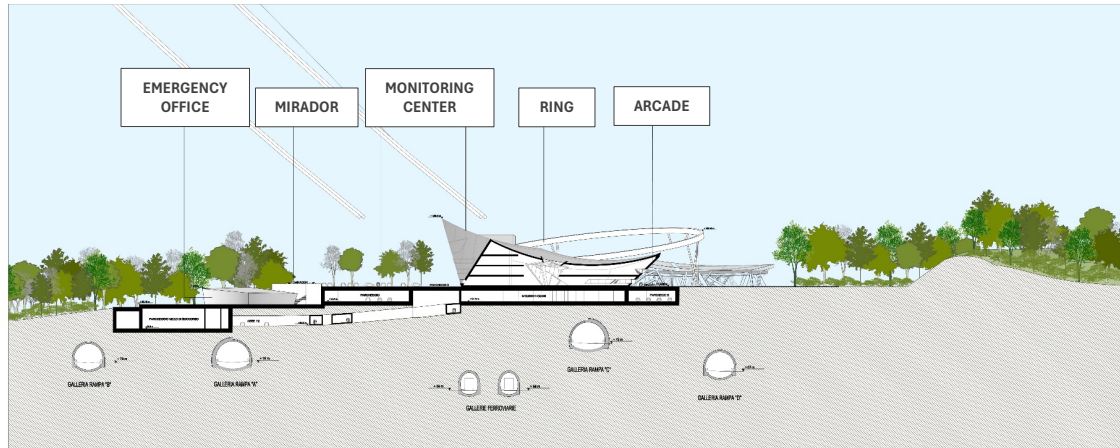
WEST ELEVATION



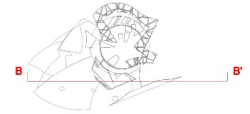
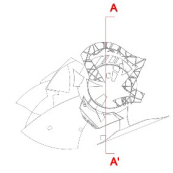
NORTH ELEVATION



SECTION A



SECTION B



AREA A1 - FASCIA ARBOREA PINETA

AREA A1 - FASCIA ARBOREA PINETA

DESCRIZIONE COSETO ARBOREO

AREA A1 - FASCIA ARBOREA PINETA

DESCRIZIONE COSETO ARBOREO

AREA A1 - FASCIA ARBOREA PINETA
 QUANTITA' ALBERI: 1000
 QUANTITA' ALBERI: 1000

A1 FASCIA ARBOREA PINETA

AREA A1 - FASCIA PINETA

DESCRIZIONE COSETO ARBOREO

AREA A1 - FASCIA PINETA

DESCRIZIONE COSETO ARBOREO

AREA A1 - FASCIA PINETA
 QUANTITA' ALBERI: 1000
 QUANTITA' ALBERI: 1000

AREA A2 - FASCIA LITIBRANEA PALME

AREA A2 - FASCIA LITIBRANEA PALME

DESCRIZIONE COSETO ARBOREO

AREA A2 - FASCIA LITIBRANEA PALME

DESCRIZIONE COSETO ARBOREO

AREA A2 - FASCIA LITIBRANEA PALME
 QUANTITA' ALBERI: 1000
 QUANTITA' ALBERI: 1000

A2 FASCIA LITIBRANEA PALME

AREA A2 - FASCIA CENTRO ORZIONALE PINETA CARNEFELLO

DESCRIZIONE COSETO ARBOREO

AREA A2 - FASCIA CENTRO ORZIONALE PINETA CARNEFELLO

DESCRIZIONE COSETO ARBOREO

AREA A2 - FASCIA CENTRO ORZIONALE PINETA CARNEFELLO
 QUANTITA' ALBERI: 1000
 QUANTITA' ALBERI: 1000

AREA A3 - FASCIA ARBOREA MISTATA

AREA A3 - FASCIA ARBOREA MISTATA

DESCRIZIONE COSETO ARBOREO

AREA A3 - FASCIA ARBOREA MISTATA

DESCRIZIONE COSETO ARBOREO

AREA A3 - FASCIA ARBOREA MISTATA
 QUANTITA' ALBERI: 1000
 QUANTITA' ALBERI: 1000

A3 FASCIA ARBOREA MISTATA

AREA A3 - FASCIA ARBOREA MISTATA

DESCRIZIONE COSETO ARBOREO

AREA A3 - FASCIA ARBOREA MISTATA

DESCRIZIONE COSETO ARBOREO

AREA A3 - FASCIA ARBOREA MISTATA
 QUANTITA' ALBERI: 1000
 QUANTITA' ALBERI: 1000

AREA A4 - FASCIA ARBOREA MISTATA

AREA A4 - FASCIA ARBOREA MISTATA

DESCRIZIONE COSETO ARBOREO

AREA A4 - FASCIA ARBOREA MISTATA

DESCRIZIONE COSETO ARBOREO

AREA A4 - FASCIA ARBOREA MISTATA
 QUANTITA' ALBERI: 1000
 QUANTITA' ALBERI: 1000

A4 FASCIA ARBOREA MISTATA

AREA A4 - FASCIA ARBOREA MISTATA

DESCRIZIONE COSETO ARBOREO

AREA A4 - FASCIA ARBOREA MISTATA

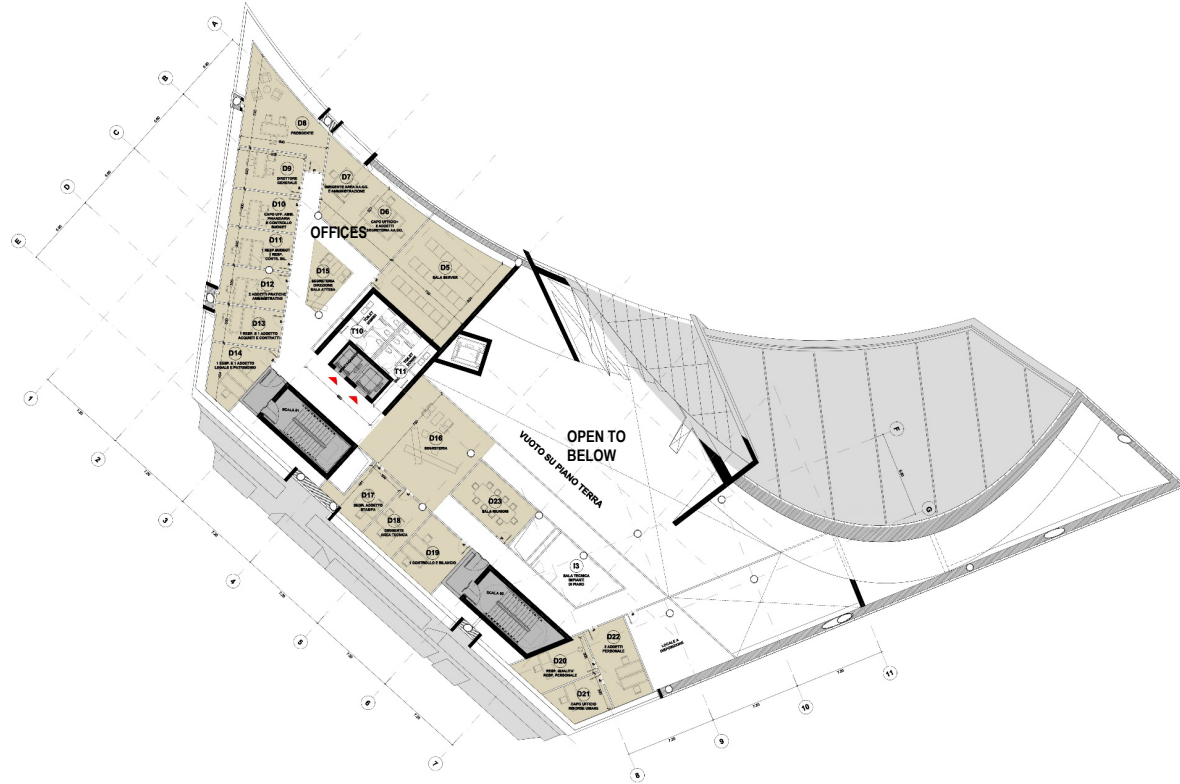
DESCRIZIONE COSETO ARBOREO

AREA A4 - FASCIA ARBOREA MISTATA
 QUANTITA' ALBERI: 1000
 QUANTITA' ALBERI: 1000

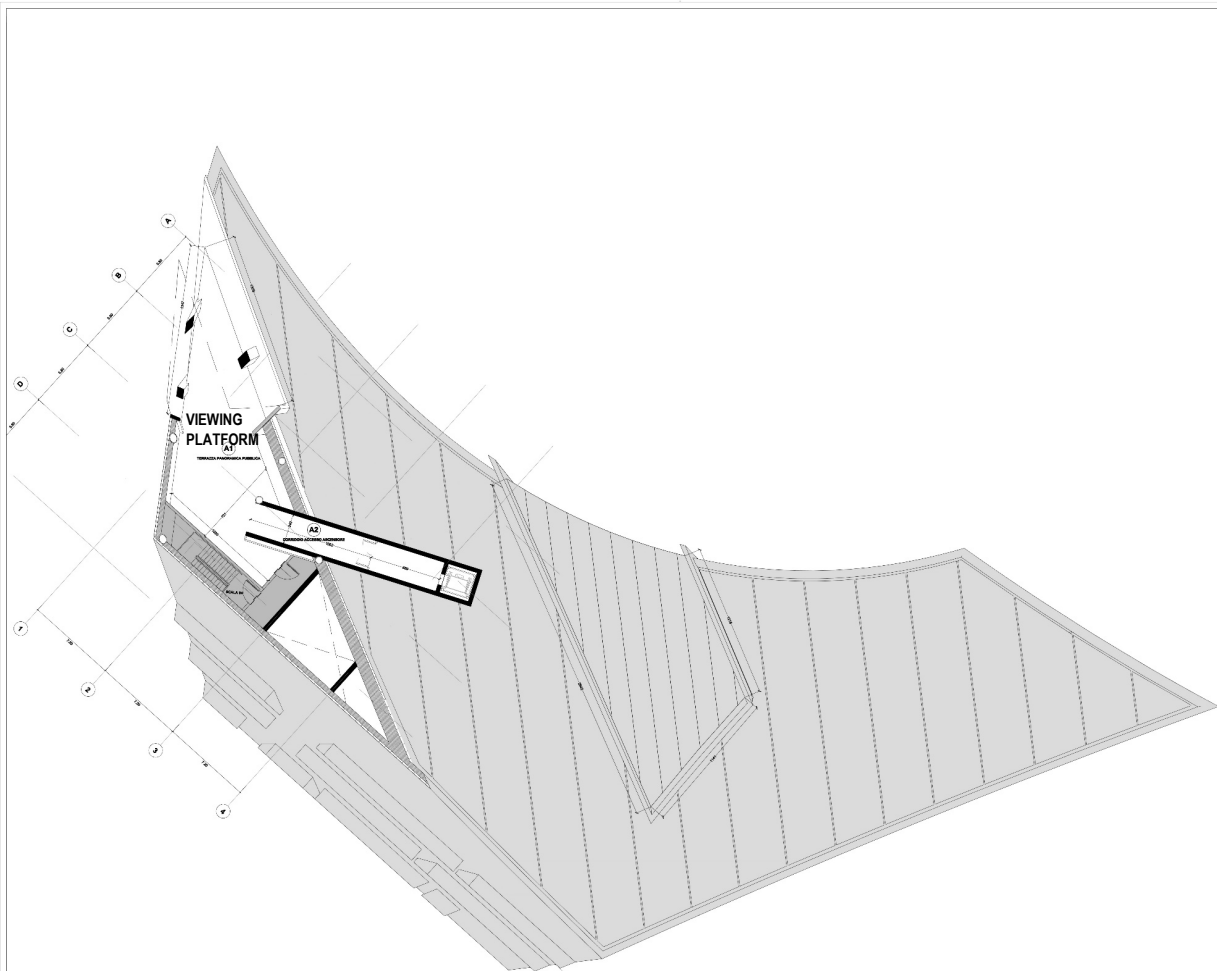
LANDSCAPING – TREE TYPOLOGY



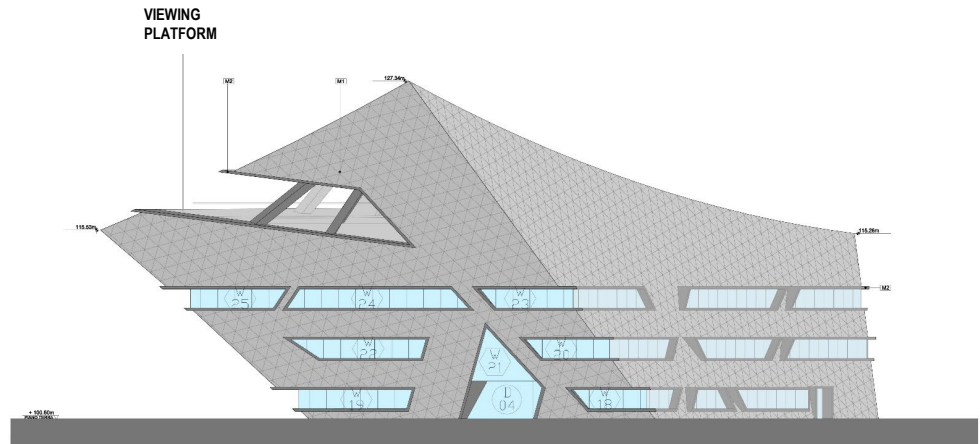
SECOND FLOOR PLAN. MONITORING CENTER



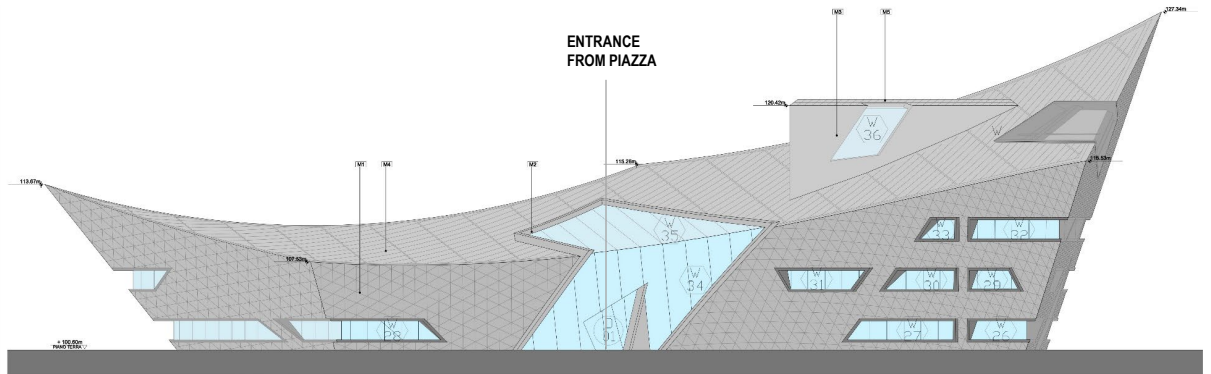
THIRD FLOOR PLAN. MONITORING CENTER



VIEWING PLATFORM. MONITORING CENTER



WEST ELEVATION



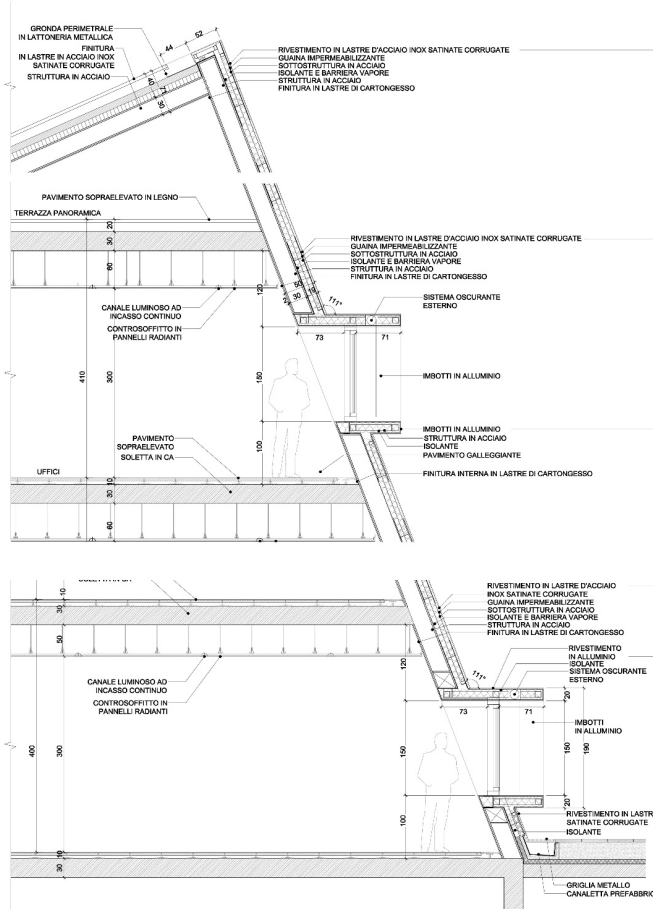
NORTH ELEVATION

PIANO 4
L.V. + 116.60M (+16.00)

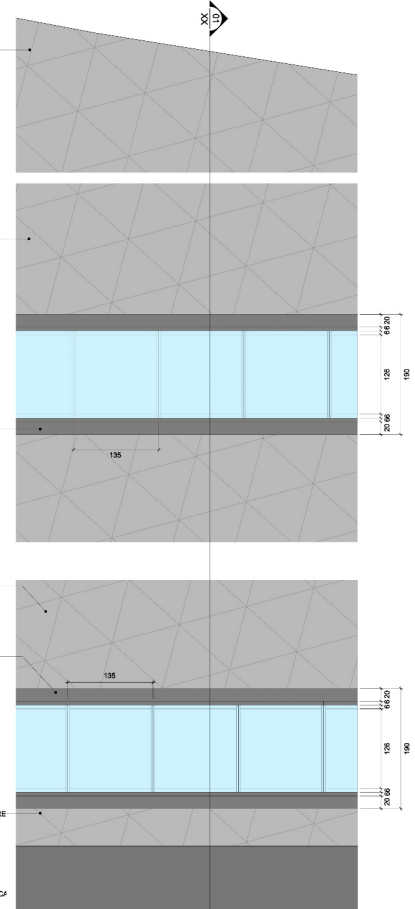
PIANO SECONDO
L.V. + 108.60M (+8.00)

PIANO PRIMO
L.V. + 104.60 M (+4.00)

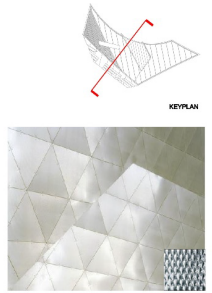
PIANO TERRA
L.V. + 100.60 M (+0.00)



ENLARGED SECTION



ENLARGED ELEVATION

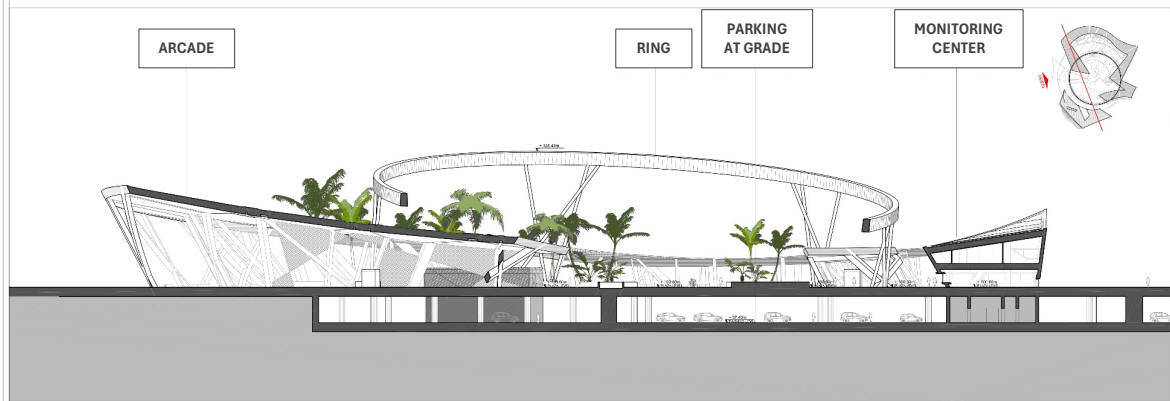


FINITURA DI FACCIATA
ACCIAIO INOX SATINATO CORRUGATO

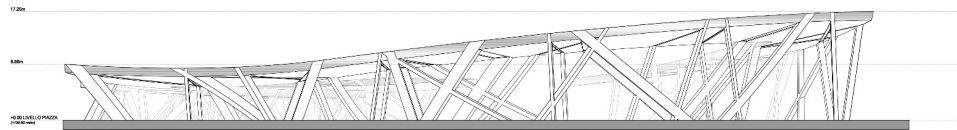
**SATIN-FINISHED STAINLESS
STEEL SHEET CLADDING**



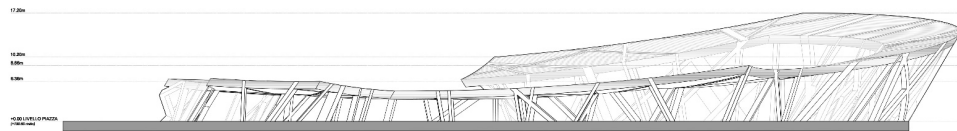
SECTION LOOKING WEST



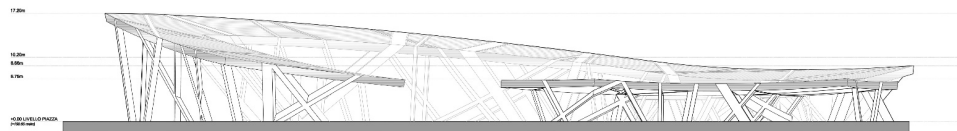
SECTION LOOKING EAST



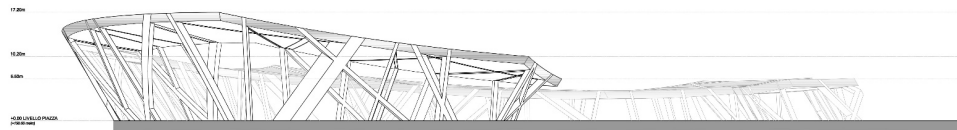
01 PROSPETTO NORD
1/200



02 PROSPETTO EST
1/200



03 PROSPETTO SUD
1/200



04 PROSPETTO OVEST
1/200



ELEVATIONS. ARCADE

SUSTAINABILITY

- **Building Integrated Photo Voltaics (BIPV) on South-oriented facades**
- **Potential for green roof on Monitoring Center**
- **Trees and reflective pools improve microclimate on Piazza**
- **Light stone paving avoids heat island effect**
- **Rainwater harvesting**
- **Reuse of grey water**

VIEW OF PIAZZA MEDITERRANEO AND MONITORING CENTER





VIEW OF MONITORING CENTER ATRIUM



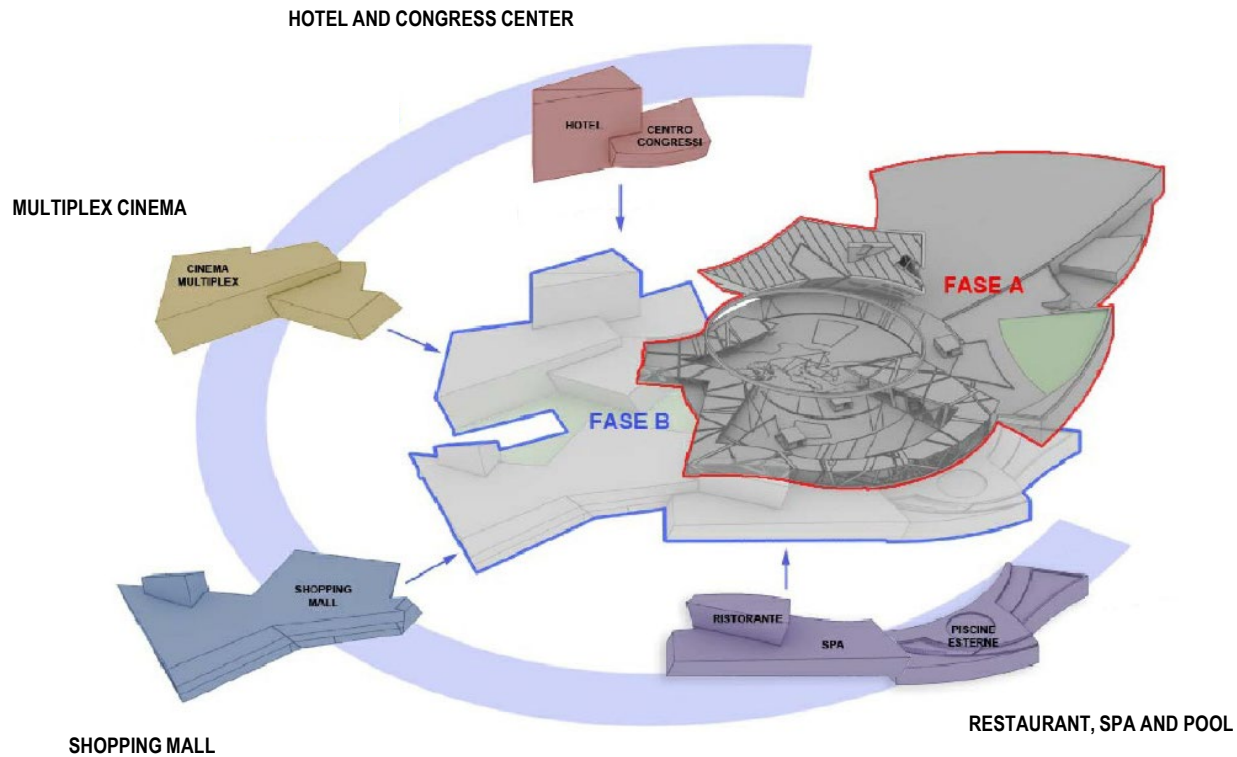
VIEW OF PANORAMIC ARCADE



VIEW OF PIAZZA DEL MEDITERRANEO

COMMERCIAL CENTER (PHASE B)

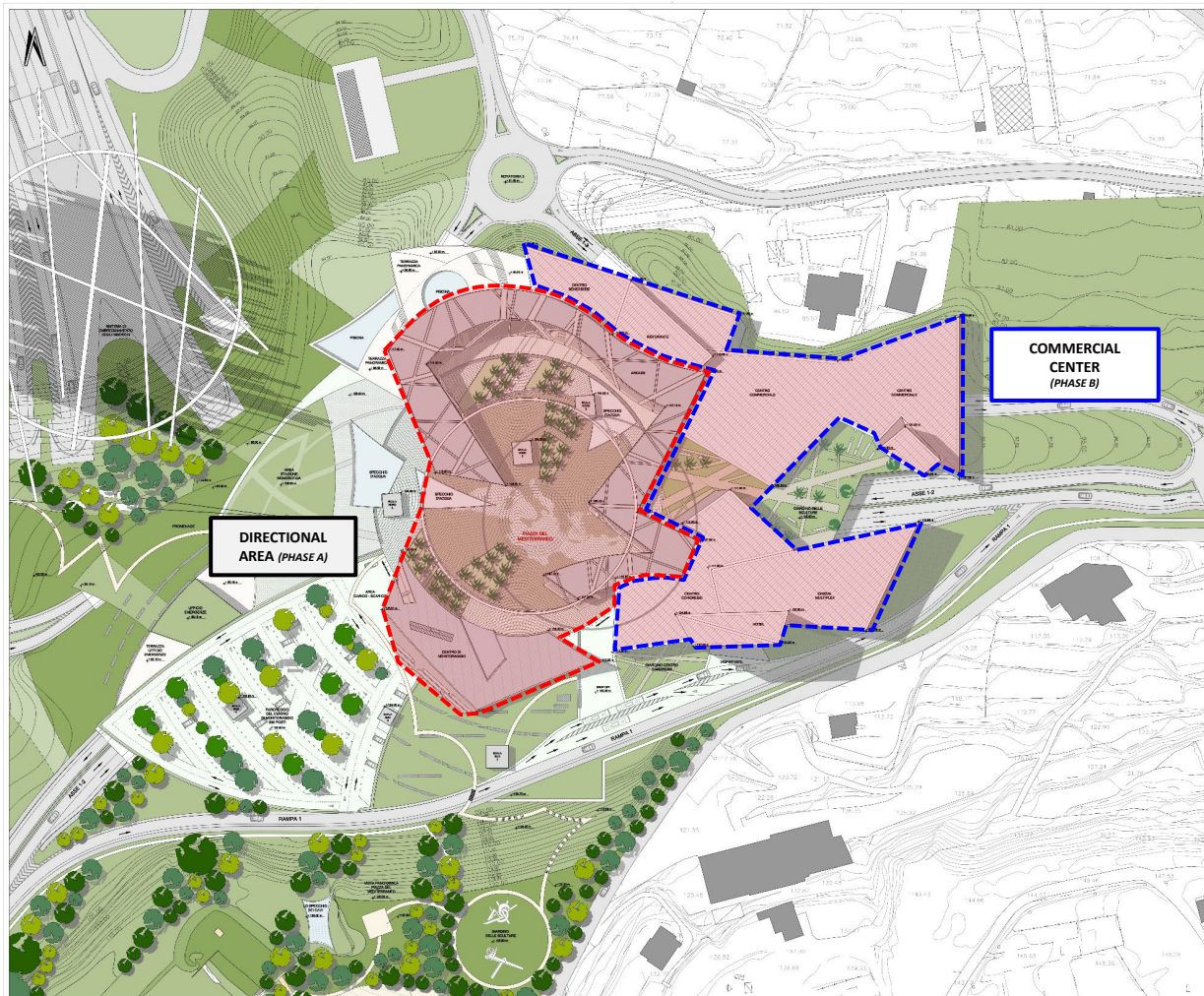
- **Increase the attraction of the Directional Area by adding a Commercial Center**
- **Shopping mall, restaurants, cafes and a multiplex cinema, later a a hotel, conference center, spa and pools**
- **Sculpture gardens**
- **Add value to whole Calabria by offering new social and economic opportunities**



PHASING DIAGRAM



SITE PLAN. DIRECTIONAL AREA AND COMMERCIAL CENTER



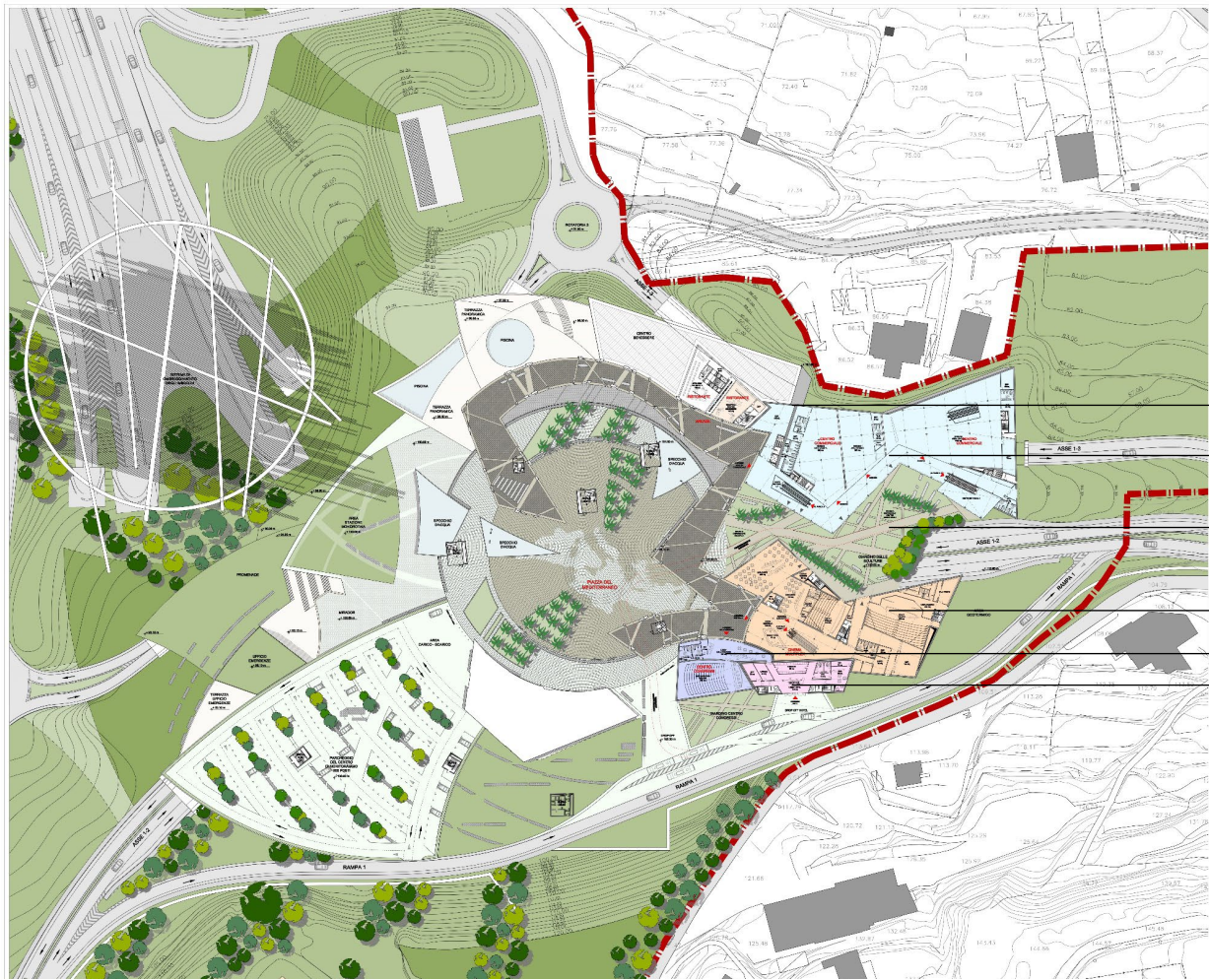
SITE PLAN. DIRECTIONAL AREA AND COMMERCIAL CENTER



BUSINESS CENTER

SHOPPING MALL

BASEMENT PLAN. COMMERCIAL CENTER



RESTAURANT

SHOPPING MALL

SCULPTURE GARDEN

MULTIPLEX CINEMA

CONGRESS CENTER

HOTEL

GROUND FLOOR PLAN. COMMERCIAL CENTER



- RESTAURANT
- SHOPPING MALL
- SCULPTURE GARDEN
- MULTIPLEX CINEMA
- CONGRESS CENTER
- HOTEL

SECOND FLOOR PLAN. COMMERCIAL CENTER



INTERIOR VIEW OF COMMERCIAL CENTER

VIEW OF PIAZZA CANNITELLO AND WATERFRONT AREA



AERIAL VIEW OF DIRECTIONAL AREA AND BRIDGE



Studio Libeskind